

ARCHITECTURAL SYSTEM WINDOW & FACADE

Encore[®]

ALUMINIUM

“Metal For Every *Purpose*”

About Us

Since 1991, our company has been a leading manufacturer of high-quality windows and doors. Our extensive experience as former window installers has given us a deep understanding of quality standards, ensuring that we deliver top-notch products to our customers. We primarily serve clients who demand excellent aluminum frames at competitive prices, along with friendly service and efficient delivery times. In addition to windows and doors, our Facade Division offers innovative and top-notch solutions for all your facade needs.

Our comprehensive services include expert consultancy in selecting, designing, and structuring various openings, such as windows, doors, curtain walls, and conservatory roofing systems. Our commitment to excellence has earned us a reputation in the market of Aluminum System Windows and Doors. Throughout the production process, we strictly adhere to European Standards and leverage modern technology to meet the highest industry standards.

Customer satisfaction is our utmost priority. To enhance the experience, we have set up an experience center where clients can interact closely with our products and receive detailed explanations about their quality. Choose Alcom for your next project and discover the difference of working with a trusted industry leader. Contact us today to discuss your requirements, and let us turn your vision into reality



Why Alcom?

1. Quality & Durability
2. Innovation
3. Design Flexibility
4. Energy Efficiency
5. Sustainability
6. Performance & Security
7. Low maintenance
8. Profesional Support
9. After Sales Service



Cost effective



Noise Reduction



Long Lasting &
Low maintenance



More Colour
Choice



Built For Extreme
Weather Conditions



Water
Tittghtness



100% Recyclable



Save Energy

BI-FOLD SYSTEMS



Encore®

ALUMINIUM

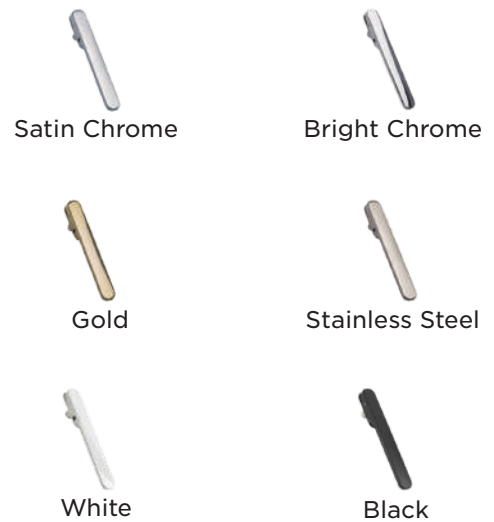
"Metal For Every Purpose"



SERIO BI-FOLD SYSTEM - 70



- Fully weather-sealed.
- Handle with key locking
- Large dimensions and wide spans
- Available in all standard RAL colours.
- Top and bottom shoot-bolt locking
- Maximum Shutter Dimensions : 900mm x 3000mm
- Wind resistance, air permeability and water tightness

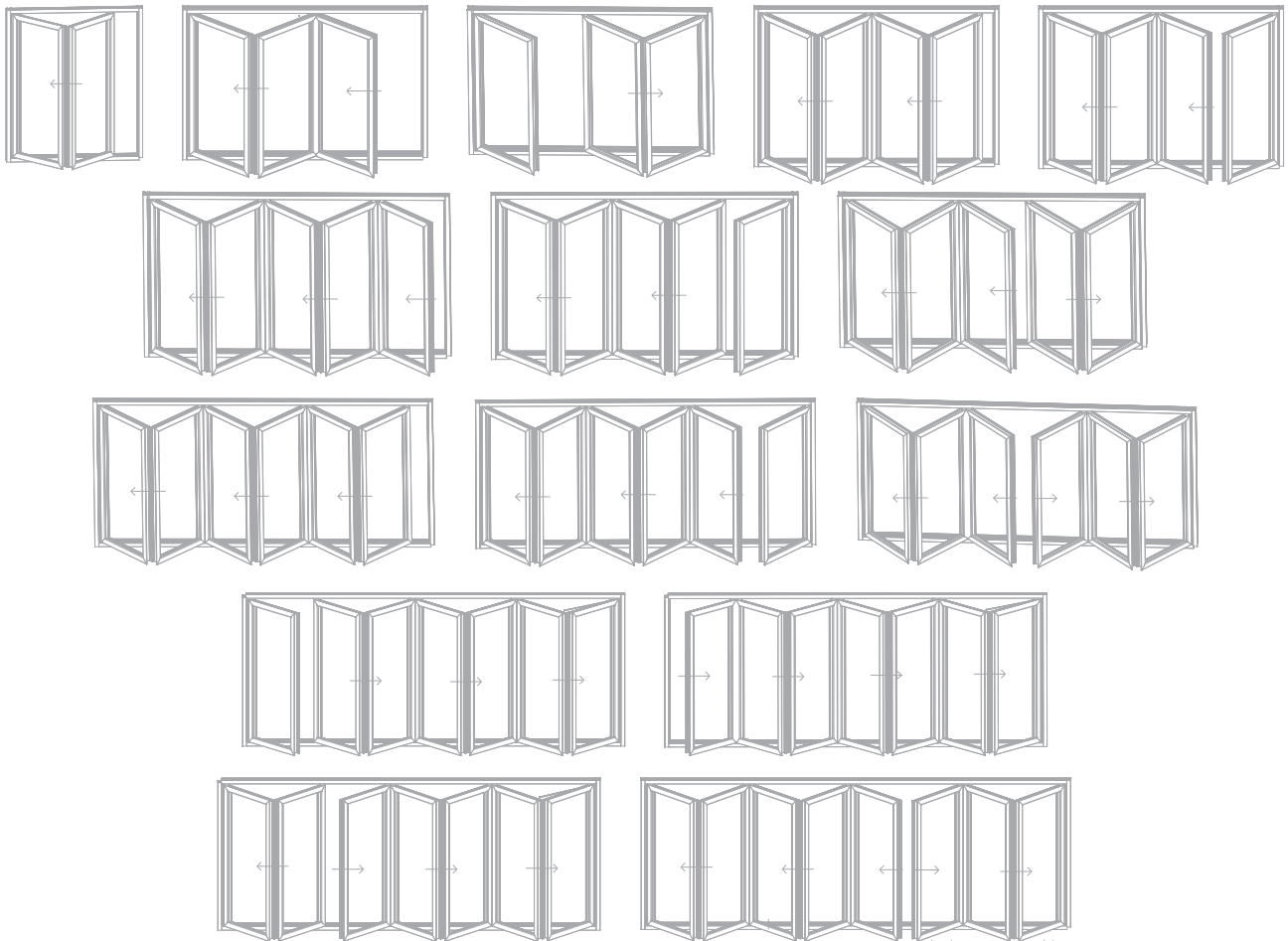


Testing Parameter

Summary of testing procedure	Result		
	Test Standard	Classification Standard	Test Standard
Air permeability	BS EN 1026:2000	BS EN 12207:2000	600Pa (Class 4)
Water tightness	BS EN 1027:2000	BS EN 12208:2000	600Pa (Class 9A)
Wind resistance	BS EN 12211:2000	BS EN 12210:2000	1200 Pa (Class A2)
Exposure category		BS 6375 Part 1:2009	1200

SYSTEM TYPOLOGY

The Typologies Shown Folding Towards The Inside and Outside Opening is Also Possible.



Top Roller with Bottom Roller



The test method followed the principle of Annex D of BS EN 1191: 2012

Features & Benefits:

- 10000 cycle tested with installed door. (buildcheck, UK)
- Stainless Steel 304 rollers with zero tolerance.
- 150kg weight capacity of door panel. (buildcheck, UK)
- High quality needle roller bearings. (Germany)
- Stainless Steel 304 strong and corrosion resistance cast construction.
- One piece design of roller body, maintenance free and non breakable.
- Black, White & Silver colour powder coating.
- Fewer components than competitor rollers and hinges.

SLIDING SYSTEMS



Encore®

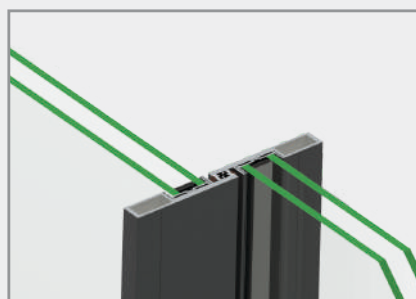
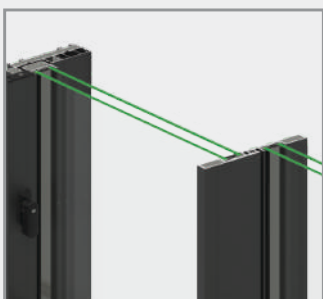
ALUMINIUM

"Metal For Every Purpose"





ULTRA SLIM SYSTEM - 20

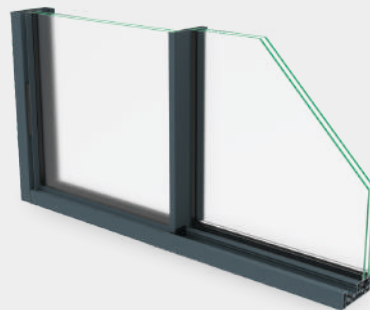


- Highest Aesthetic looks
- Extremely Energy Efficient
- Effortless smooth sliding action
- Long lasting & Highly functional
- Ultraslim Systems are extraordinary systems for Large Openings
- Maintenance free & Structural Bonding & Maximum Safety & Security
- Single double and triple glazed can work better in this type of door



MINIMAL SYSTEM - 19

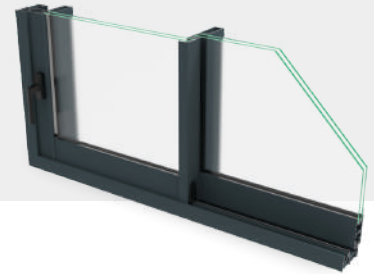
- Single & double glazed tiles
- Multiple Locking options
- Thinnest sight lines of 19mm
- Accessory system: High quality accessories achieved
- European standard.
- Various color for choice
- Customization in terms of size, glass and colour
- Multipoint Lock with nob handle



PORTON SYSTEM - 42

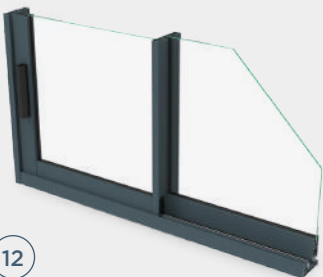


- Strengthen your window at fullest
- 45 degree joint in frame & 90 degree joining for shutters
- Maximum shutter dimension: 1500x3600 mm
- Siliconised EPDM U glazing gasket for excellent air and water tightness
- Central Reinforcement choices in rectangular & aerodynamics shapes for high wind load and larger height window / door applications



VENSTER SYSTEM - 40

- Slim frame with 90 degree joining
- Varieties of shutter combinations are also possible
- An ideal sliding window option for big height and large dimensions of window opening
- Multiple tracks possible due to inclusion of monotrack frame
- Maximum shutter dimensions: 1500x3000 mm



RENZO SYSTEM - 36



- A wide range of aluminum profiles & array of central mullions to choose as per wind load conditions
- Wider track & deeper gutter for water drainage and easy maintenance
- Maximum shutter dimensions: 1500x3000 mm



JENSTER SYSTEM - 32

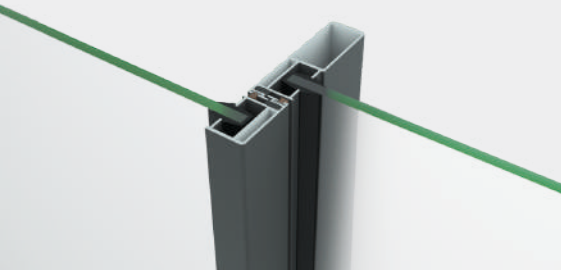


- Versatile & durable
- Reinforcement interlock
- Highly durable & can withstand extreme temperatures
- Built to withstand wind load pressure of up to 3.5 kpa
- Eco-friendly
- Up to 10 Feet



FENSTER SYSTEM - 29

- Infill glass can be single or double glazed (thickness can vary from 5 to 20 mm)
- Rails in anodized aluminum or stainless steel option
- Excellent insulation and noise reduction
- Slim interlock of 22mm that gives an uninterrupted view of the world outside
- Maximum Shutter Dimensions : 1200 to 2400 mm



NAUTICA SYSTEM - 25



- Its adjustable rollers can carry up to 120kgs per sosh
- 5 or 6 single glass options
- Sleek Design for best visibility
- Affordable prices with best Quality & Service
- Maximum Shutter Dimension's 900mm x 1800mm



CASEMENT SYSTEMS

Encore[®]
ALUMINIUM
"Metal For Every Purpose"



JABRON CASEMENT SYSTEM - 50



- Available in single & double glazing 5,6,12,24 and 32 mm
- Options for single/double shutter and
- Two point locking available complete air and water tightness
- EPDM for longer life of window gaskets
- Corner joints possible with the help of spring loaded corner cleat
- Heavier section is suitable for bigger



JABRON TILTRUN SYSTEM

- Saving space
- Protecting your home from rain
- Allowing draft-free ventilation
- Perfect for sunlight penetration
- Tilt and turn windows are a must-have for your homes
- Maximum window shutter dimensions: 600 mm x 1500 mm
- Our windows offer protection from wind, air, water, noise, and sound disturbances

JABRON DOOR SYSTEM - 50

- System Window Series based on European groove (EG) design
- Maximum window shutter dimensions
- 900 mm x 2700 mm
Glazing options: 8mm, 12mm, 20mm, 24mm and 32mm
- Possibility to fit mortise lock with cylinder and spring loaded handle for doors
- Multiple-point locking available for security, complete air and water tightness.



JAYRO CASEMENT SYSTEM - 40



- Wide variety of typologies
- Single or Double glass options
- Effortless smooth opening action
- Ease of use and high functionality
- Exceptional quality with certified performances
- Maximum Shutter Dimension's 600mm x 1500mm

JION SYSTEM - 30

- Comes with a multi-locking system for enhanced security
- Multi-chambered design that provides extra strength and energy efficiency
- Ease of Operation Ventilation
- Energy Efficiency
- All surfaces are very finely smoothed and intricately finished
- Robust, durable and non-corroding



PLEATED MESH



GEORGIAN BAR



INTEGRATED BLINDS

- Space saving
- Hygienic no dirt or bacteria build up
- Control privacy with the magnetic tilter
- Ideal choice for Offices, Homes, Hospitals, Hotels, etc
- Motorized operating system (Tilt/Turn & Lift the blinds Remotely)
- Energy efficiency & acoustic properties to
- providing privacy & thermal protection



ARCH WINDOW





Encore

Hyderabad Office:
31/A/2, Kardhanur (V)
Patancheru (M), Sanga Reddy (D)
Telangana, Hyderabad
India - 502319

+91 88808 25555

sreeharsha.encore@gmail.com

www.alcomsystem.in

Encore[®]
ALUMINIUM
"Metal For Every Purpose"

Alcom
"A Better view of security"

Encore & Alcom System Window - Facade

FOLLOW US

